



Phileo Small Ruminant SYMPOSIUM

LILLE

April 8-9, 2025



Welcome booklet

A white topographic map pattern with concentric, irregular lines is located in the top-left corner of the green background.

Welcome

A short, thick white horizontal dash is positioned below the word 'Welcome'.

to the Lesaffre Campus in Lille, France! We are thrilled to host you at our state-of-the-art facility, where you will have a unique opportunity to experience our deep knowledge and expertise in the world of yeast and fermentation. Our dedicated team of professionals is eager to showcase our commitment to innovation, sustainability, and customer satisfaction. As you explore our campus and meet our team, we hope you will gain a deeper understanding of our shared mission with Lesaffre to work together to better nourish and protect the planet. Thank you for choosing Phileo by Lesaffre, and we look forward to a productive and inspiring visit.





Campus

The Lesaffre Campus in a few figures

10,000 m²
of office spaces

23,000 m²
of surface area
constructed
(work started in 2020)

13,000 m²
of lab spaces

19
hectares

700
employees



The Campus is welcoming.

For all employees, for the talents that we're going to recruit, for the partners we work with, for the companies, university and institutions that we're going to collaborate with.



The Campus is open.

It encourages discovery, the windows and their transparency reflect this open approach.



The Campus is a place for the different professions.

Professions, expertises, disciplines and functions.



The Campus is integrated into its environment.

Slipped into amidst nature, open to it, respectful of its flora and fauna, using its energy. Composed of paths and avenues that we walk on to find our inspiration, through our contemplations or the people we meet on our way. A place that is both connected to Lesaffre's history and to the future of this region and the Group.



Prof. David YANEZ-RUIZ

David is Research Professor at the Spanish Research Council (CSIC) in Granada, Spain. He has got a PhD in Animal Production (2003, University of Cordoba) and has worked at the University of Wales (2003-2007, UK) and University of Queensland-CSIRO (2019-2020, Australia). His research focuses on the development of nutritional strategies to improve the efficiency of the rumen microbial fermentation, with special emphasis on the development of the rumen in early life and the modulation through the use of nutritional additives. He has participated in more than 10 EU projects, is currently coordinating the Horizon Europe Re-Livestock project (www.relivestock.eu) and has worked with the livestock feed industry in more than 50 research contracts.



Dr. Eric PINLOCHE

Eric has been working in the livestock feed industry for more than 15 years specialising in the development of feed additives through microbiome modulation. He obtained a PhD from Aberystwyth University in 2010 where he pioneered in the use of next-generation sequencing to study the rumen microbiome. He then joined Phileo as a microbiology R&D scientist to decipher the mode of action of live yeast on the rumen microbiome through the development of innovative in-vitro model. He further developed his expertise in animal health and nutrition leading Adisseo's in-vitro platform for more than 6 years, dedicated to the development of feed additive for multi-species application. He joined ADM in 2023 as a monogastric microbiome manager to finally come back to Phileo to bring his skills as R&D manager in-vitro digestibility tool and microbiome.



DVM Marjon VERBOGT

Marjon grew up on a goat farm in the Netherlands. That is where her passion for goats started. She studied Veterinary Medicine and worked for 9 years in the field as a Ruminants Veterinarian, with 4 years in a practice just for goats. In 2020 she started working as a Nutritionist and advisor in the Feed Industry. Now she works at Voergroep Zuid as a Nutritionist Ruminants, with a specialty in goats. In her work she loves to combine her knowledge of Veterinary Medicine and Nutrition to improve performance and health of the herds of her farmers.



DVM Silvia CORSO

Silvia is a veterinarian graduated from the University of Sassari and specialized in Applied Ethology and Animal Welfare at the Faculty of Veterinary Medicine of the University of Naples Federico II. She has worked as a freelance veterinarian in the livestock and pets sector. She is among the founders of the Sementusa protocol in 2002 and among the founders of the Sementusa association in 2016. She is past president and today she is the animal welfare representative for the association. Since 2022 and still today she is an employee of the Laore Regional Agency (agency of the Autonomous Region of Sardinia), in the Service for the Development of Zootechnical Supply Chains and Animal Welfare Policies (sector to Support Regional Policies on Animal Welfare).

Erika PAIVA



Erika graduated with a degree in veterinary medicine from the State University of Londrina - Brazil in 1996, and did a MBA in Marketing in 2014. Before joining Phileo, she gathered 10 years of experience as independent consultant for beef and milk livestock farms and 9 years of experience as product manager, production manager and technical manager for a premix company in Brazil. In 2015, she joined Phileo – based at Lesaffre Brazil – as Technical Sales Manager for Ruminants working directly with the technical support and sales for customers and prospects. On her last year in Brazil, she took the position of Phileo Brazil Country Manager. Since 2022, Erika has been working at Phileo's headquarters in France and has taken on the role of Category Manager.

Prof. Eleni TSIPAKALOU



Eleni is a Full Professor in Animal Science, specializing in Ruminant Nutrition. She holds a BSc, MSc, and PhD in Animal Nutrition from the Agricultural University of Athens and completed post-doctoral research at the University of Reading. Dr. Tsiplakou has published over 130 research papers and 150 abstracts in national and international conferences. She has led 4 research projects and participated in 23, including 5 EU-funded initiatives. Dr. Tsiplakou served as Vice-President (2016-2019) and secretariat (2010-2016) of the Nutrition Commission of the European Federation of Animal Production (EAAP). She received the Young Scientist Award from the EAAP in 2017. She has been included in the World's Top 2% of Scientists at Stanford University ranking for 2022, 2023 and 2024. She is Associate Editor for the Italian Journal of Animal Science and serves on the editorial boards of several journals.

Alexandros MAVROMMATIS



Assistant Professor in Animal Nutrition. Laboratory of Nutritional Physiology and Feeding, Agricultural University of Athens

Alexandros conducted post-doctoral research on the project Microalgae for Microbiome: The Effect of Dietary Supplementation with Microalgae on Goats' Microbiome, utilizing metagenomics and metabolomics approaches. This project was funded by the State Scholarships Foundation (I.K.Y.). Additionally, he participated in several other competitive research projects funded by the EU and Greece (2019-2022). He has lectured at the Veterinary School of the University of Thessaly and conducted research as a visiting scholar at the Consorzio Agrario di Parma in collaboration with the Veterinary Department of the University of Parma. His research focuses on experimental trials in applied nutrition to evaluate feed additives and unconventional feedstuffs, investigating symbiotic microbiomes (e.g., rumen microbiome) using molecular techniques (metagenomics), and exploring gene expression and pathways regulating immune-oxidative functions.



Prof. Alberto Stanislao ATZORI

Alexandro is an Associate Professor in Animal Nutrition at University of Sassari-Italy where he got a degree in Agricultural Science and a PhD in Animal Science. Furtherly he spent visiting periods at Texas A&M University (USA), in Spain and Colombia. In the last 20 years he has been working on ruminant nutrition models and investigating technical, economic and environmental indicators to improve farm management and sustainability. The actual research deals with strategic management of farms, and systemic modeling applied to sustainable management of dairy and beef farming systems. He owns the Animal New tech srl, a Spin-Off from the University of Sassari to boost technological transfer to the livestock sector.



Maxime BRICHE

After graduating from ISA (Institut Supérieur d'Agriculture de Lille), Maxime began his career as a technician for a Belgian feedmiller in the north of France to provide nutritional advices to farmers during 3.5 years. In 2012, he joined Phileo, business unit of the Lesaffre group, world leader in live yeast, and his mission was to demonstrate within the distribution network the interest of solutions in ruminant farming.

Since 2019, he has held the responsibility of ruminant market manager in Western Europe. Its main missions are to provide technical support to its tech & sales colleagues as well as Phileo customers by sharing its field experience. He also monitors trials carried out with partners (institutes) answering current and futur trends and needs in the ruminant market in Western Europe.

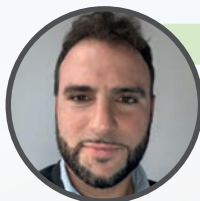


Julie DUCLOS

After graduating as a master's degree in animal science, from ESA in Angers, France, Julie had gathered 15 years of experience in Ruminants nutrition and health. From vet pharmaceutical to mineral and feed additive industry, she held different global and regional position as technical manager, strategic marketing and innovation manager. In 2023 she joined Phileo as Global Species Manager for Ruminants. Since January 2025, Julie is Technical leader for Ruminants managing Phileo's regional technical Ruminants team, dedicated to support our customers all over the world.



Contacts



FABRIZIO ZONGOLI

Tel. : +39 3485731062

Email : f.zongoli@phileo.lesaffre.com



MAXIME BRICHE

Tel. : +33 (0)6 73 00 94 39

Email : m.briche@phileo.lesaffre.com



MARIE FAUCOEUR

Tel. : +33 (0)6 08 05 70 83

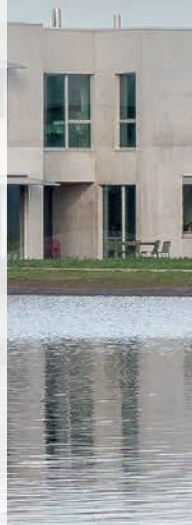
Email : m.faucoeur@phileo.lesaffre.com



Emergency

In case of emergency 112 is a free emergency number that can be dialled from any landline or mobile phone. Operators are English speakers who will connect you to the appropriate local services.

Do not call 911, this will not work in France.



Agenda

Tuesday April 8

15:00 Welcome Coffee

Presentation & Visit of Lesaffre R&D Facilities

- **Formulation Platform**
- **Forum Avenue Léon Lesaffre Tour**
- **Q&A with Phileo R&D Experts**

This exclusive tour will provide you with the opportunity to see our state-of-the-art research and development capabilities firsthand, as well as engage directly with the Phileo team of experts who are driving innovation in small ruminant nutrition and health.

19:00 Reception & dinner

Wednesday April 9

08:00 Welcome Coffee

- **Unlocking small ruminant potential at Lesaffre**
Manuel Maire, General Manager, Phileo by Lesaffre

Session 1 - Rumen health and nutrition

- **What is a healthy rumen and how we develop it from early life**
David Yáñez-Ruiz, PhD, Research Professor, CSIC - Spain
- **Supporting rumen health with Actisaf®**
Eric Pinloche, PhD, R&D Manager, Phileo by Lesaffre

Session 2 - Herd management and performance

- **Maximizing health and feed intake in transition period**
Marjon Verbogt, Ruminant Nutritionist, Voergroep Zuid - The Netherlands
- **Optimizing herd profit through farm management and fertility**
Silvia Corso, DVM, Animal Welfare Representative, Sementusa Group - Italy

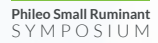
Session 3 - Harnessing the power of small ruminants

- **Probiotic and postbiotic innovations to boost small ruminant performance**
Erika Paiva, Category Manager, Phileo by Lesaffre
- **Impact of ActiSaf®, Safmannan®, and SelSaf® on milk yield, quality, and immune-oxidative status in dairy sheep under intensive farming systems**
Eleni Tsiplakou, Professor in Ruminant Nutrition and Alexandros Mavrommatis, Assistant Professor in Animal Nutrition, Agricultural University of Athens - Greece

Session 4 - Sustainability and environmental impact

- **Improving profitability and environmental footprint: The European approach**
Alberto Atzori, PhD, Associate Professor, University of Sassari - Italy
- **Enhancing performance, positively impacting quality and carbon footprint**
Maxime Briche, Western Europe Ruminant Manager, Phileo by Lesaffre
- **Unlocking the future: A roadmap for small ruminant success**
Julie Duclos, Global Technical Leader, Phileo by Lesaffre

16:30 End of the session





Phileo Small Ruminant
SYMPOSIUM





by **Lesaffre**

Act with nature for animal care



Phileo by Lesaffre

137, rue Gabriel Péri - BP 3029
59703 Marcq-en-Barœul - France
Tel. : +33 320 81 61 00 - Fax: +33 320 99 94 82
phileo-lesaffre.com

Contact

info@phileo.lesaffre.com

